



## ARCHWAY NEWS SPRING 2026

### WELCOME TO OUR Latest Newsletter



Inside, you'll find a snapshot of some of the great things happening across Archway – from recent activities and celebrations to the projects and events we're looking forward to in the months ahead.

It's also an opportunity to see how your support is transforming lives and to discover how you can get involved in helping us raise the vital funds we need for the year ahead.



DYCE

### GETTING READY TO CELEBRATE



# 30 YEARS

It's already shaping up to be an exciting year here at Dyce, and we're looking forward to sharing it with everyone.

Alongside welcoming a new manager, we're thrilled to share that our respite service will be celebrating its 30th anniversary this year. It's a huge milestone, and we're planning to mark it properly – so keep your eyes peeled for celebrations, special events, and fundraising opportunities throughout the year. We can't wait to involve everyone in making it memorable.

We also can't forget the mad snow we battled through in January! Despite the chaos, the team, and the people we support took it all in good spirits, and we're happy to say we survived it with plenty of stories to tell.

We're keeping busy with plenty of activities – whether it's bowling, a trip to the pub to watch the football, or simply enjoying walks in our local community.



## Dates for your Diary

### FORTHCOMING EVENTS

Friday 24th April

**Archway at the Barn**

Friday 5th June

**Archway Charity Golf Day**

Sunday 7th June

**Aberdeen Kiltwalk**

Saturday 27th June

**Strawberry Tea**

@ The Hub

Cults Outreach Centre

Saturday 29th August

**Ride the North  
Bike Ride**



## WELCOME TO THE TEAM!



Hello everyone. I'm Michelle Rice,  
the new Respite Service Manager at Dyce.

I've recently joined Archway and have been really enjoying getting to know the team, the families, and of course the wonderful individuals we support. I'm looking forward to bringing my experience into the role and working together to keep Dyce a positive, welcoming place for everyone who comes through the door.

I'm always happy for a chat, so please feel free to stop me if you see me around or get in touch any time.



## Everyone is having so much fun!

We have been making the most of the colder months by enjoying a wide range of fun activities indoors. There have been plenty of cosy movie days, baking sessions, painting, water play, games nights, and even some fantastic karaoke! When the weather allowed, everyone was keen to get out and about.

There were trips for lunches and, of course, a bit of shopping – especially popular with the girls! Others enjoyed visits to the cinema and bowling, while some of the boys spent time at their favourite gaming spot, Geek Retreat, which was sadly a much-loved place before it closed last month.

There have also been some very special milestones. Nicola J celebrated her 40th birthday – a truly meaningful occasion, as she has been part of TMC since it first opened, making it a privilege for everyone to celebrate alongside her.

Another service user, Shaun, completed the Santa Run and raised over £1,000 for Archway – a wonderful achievement. The Christmas party was a huge success, with everyone enjoying the music, festivities, and time together. There were also lots of Christmas arts and crafts and visits to the Christmas markets, helping create special memories and a real sense of joy throughout the season.



We are looking forward to warmer weather and longer days so we can get out and about even more.



TWO MILE CROSS



HUXTERSTONE

At Huxterstone, Paul, William, Laura and Hayley have been very busy. They have enjoyed trips to the panto, Blair Drummond Safari Park, Peterhead Prison Museum, the Zoology Building and mini golf.

In the recent snowy weather, they enjoyed making most of the time in the house with movie days, building indoor forts and using snow as ice cream in our ice cream parlour. We are looking forward to the warmer weather when we can get back into the garden as we have some keen gardeners in the house!



## LOOKING FORWARD TO GET BACK INTO THE GARDEN . . .



# Holiday Fun - BOOK NOW



Betty's Place, our lovely wheelchair accessible holiday home at Lochloy Caravan Park in Nairn, is open again and ready to welcome guests.

Last year, many Archway families enjoyed memorable breaks at Betty's Place, and we are thrilled to continue offering this opportunity. This year we hope even more families will enjoy its beautiful surroundings, stunning beach, wide range of on-site facilities and easy access to Nairn's local attractions.

You can check availability and book via the link below and don't forget that through fundraising we have managed to keep costs down again to make it even more affordable. [www.archway.org.uk/service/holiday-home/](http://www.archway.org.uk/service/holiday-home/)



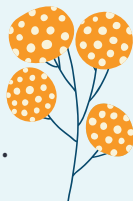
## EXPLORING THEIR NEW SURROUNDINGS

Mary and Beth have settled into their new home since moving from Berryden Mills in December, and it's been lovely to see them making it their own.

They've been enjoying choosing items for the house and have even been busy in the kitchen, baking some lovely fine pieces together.

They've also been getting out and about, enjoying trips to the bowling and heading out for lunch, as well as exploring their new surroundings and discovering what's nearby.

With spring just around the corner, Mary and Beth are especially looking forward to spending time in the garden and enjoying the warmer, brighter days ahead.



DOMINIES ROAD

## MAKING NEW MEMORIES!



ST MARGARETS' PLACE

The ladies had a very busy and enjoyable Christmas period, taking part in multiple parties, social gatherings, and outings, which everyone really looked forward to.

It was a lovely opportunity for everyone to spend time together, celebrate the festive season, and make special memories. We also held our annual Christmas get-together for all the families, which was very well attended and a great success.

It was wonderful to see families coming together, sharing food, laughter, and festive cheer, and it really helped create a strong sense of community, especially for Claire's family, as this was the first time for them all together.

As we move into Spring, everyone is feeling positive and looking forward to the brighter days ahead. We can spend more time outdoors, enjoy fresh air, and take part in more outdoor activities.

There is already lots of excitement about planning holidays, day trips, and new experiences to look forward to over the coming months.





ANEST HOUSE

## A house full of smiles and fun!

Anest House has had a busy few months. We welcomed a new tenant in November – Hannah is a lovely addition to the house, full of smiles and lots of fun. We celebrated her birthday, with everyone having a lovely tea party.

Valerie continues to complete her tapestry projects, with lots of cushions and bags designed. They are so good that staff and parents, as well as people at the groups she attends want to buy them!

Morag has been keeping busy with her activities and visiting mum at home. A big thank you to all staff during the week of snow in January, they rallied together ensuring everyone was supported and had supplies until the snow stopped and roads were cleared.

We are currently renovating the annexe to welcome a new tenant who will join us in April. We are all very excited for them joining us at Anest House.



## THANK YOU SO MUCH

Thanks To All The Amazing Individuals, Families, Companies and Community Groups who have supported us and help change lives recently including:

- Banchory Lodge • Cloudy Blue
- Crossfit Aberdeen • EnQuest
- Bill Falconer • Fannies the Jewellers
- Fish&Hook • Koi Thai • McGinty's Group
- TEXO • No 10 • Ferryhill House Hotel
- Allan Henderson • Kellas Midstream
- Barney Philips • TAQA • First Bus
- The Trade Widows Fund • Humbug
- Shaun Sinclair & Family • C Tarr
- The Owl At Number 2 • Dr JAH Wilkinson

We are deeply grateful to those who have supported Archway in memory of a loved one. Your generosity is a touching tribute and helps us continue our vital work.

## WHO COULD BE OUR NEXT CHAMPION?



Partnering with Archway highlights your organisation's commitment to social responsibility and local community support.

If you work for or know of a company who would enjoy partnering with Archway for a one-off event or longer, please contact Janine.



## CHRISTMAS FUN, WAS HAD BY ALL ...

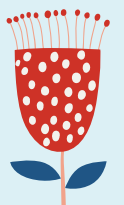
Everyone at WBR enjoyed a lovely Christmas. Residents were delighted to help pick the winning tickets for the Festive Draw, and we had a wonderful Christmas get together for family and friends, complete with lots of delicious treats and even some festive mulled wine.

The Archway Christmas party at the Beach Ballroom was a real highlight, with everyone enjoying a fantastic afternoon full of music, laughter, and celebration. On Christmas Day itself, some people spent time with their families, while

those who remained at WBR enjoyed a lovely festive feast together. There was great excitement as everyone received a special gift from Archway – something they were all very thankful for.

The snowy weather kept everyone indoors for a few days, but that didn't stop the fun. There was plenty of baking, cooking, games, and even some snowy adventures, with a few brave residents heading outside to build snowmen with staff.

It's also been lovely to see everyone getting back into their regular activities, from AMZ sessions and Zumba to day trips, bingo, and outings. Nicola's 55th birthday in February was another special occasion, celebrated with everyone around her.



WESTBURN ROAD

# Archway at the Barn

Music • Magic • Storytelling

Friday 24 April | 7pm  
The Barn, Banchory

Raffle • Auction

FEATURING:

Ed Gardyne • Paul Foy • Mike Bowyer •  
Morgan Thomson • Davey Peterson •  
Plus Special Guest Artists

Tickets **£20**  
including Welcome Drink

Archway Charitable Trust is a Scottish Charity (SC048760)  
registered by the Scottish Charity Regulator (OSCR)



MUSIC • MAGIC • STORYTELLING

# Archway at the Barn

Join us at Archway at the Barn in Banchory  
Friday 24th April, 7 - 11pm

for an evening of live music, magic,  
storytelling, and shared moments featuring  
Archway family members and service users  
and other talented local musicians.

A great night for everyone who loves  
great music and good company.

Tickets cost **£20** (including welcome drink)

Available via Eventbrite: <https://bit.ly/40BUvfl>  
or email [admin@archway.org.uk](mailto:admin@archway.org.uk)



kiltwalk

## ABERDEEN KILT WALK

SIGN  
UP!

Sunday 7th June - Sign Up for Archway

Whether you want a big challenge or a wee stroll to  
chat with friends, put your best foot forward and  
sign up for Archway. The Wee Wander goes from  
Cults Academy to the Duthie Park while the 18-mile  
Mighty Stride goes from Banchory to Duthie Park

You can sign up for Archway now using the link:  
<https://buff.ly/3423r47>



## Ride The North Bike Ride

Saturday 29 August

The iconic Ride The North Bike Ride is back on  
the 29th of August. Starting and ending at the  
spectacular Glamis Castle with loops around the  
glorious Angus hills and glens of 150k and 110k.

We have got 10 charity places giving free entry  
when you pledge to raise a minimum of £150.

To secure your place contact Janine at  
[Janine.Davies@archway.org.uk](mailto:Janine.Davies@archway.org.uk)



## RAINBOW DELIGHTS

We were delighted to receive a grant from The Trade Widows Fund recently, to  
purchase an incredible Sensory Rainbow Table. This innovative, multi-purpose digital  
table will help us respond to a range of diverse needs in a person- centred way.



TRADE WIDOWS'  
FUND CHARITY

# ARCHWAY CHARITY GOLF DAY

BOOK  
NOW!

Peterculter Golf Club | Friday 5 June

Are you a golfer, or could your company enter a team, sponsor a hole, or donate a raffle prize?

Join us for a fantastic day of golf at our Charity Golf Day.

Team package (£450 for 4) includes:

- Round of golf
- Breakfast rolls or soup and sandwiches
- Goodie bags
- Drinks at the Halfway House
- Supper and Prizegiving

Hole sponsorship available for just **£50**

archway  
care + support built around you

BOOK NOW

## 2026 Charity **GOLF** Tournament

Friday 5th June  
Peterculter Golf Club

**£450** PER TEAM OF 4

Archway Charitable Trust is a Scottish Charity (SCO48760) regulated by the Scottish Charity Regulator (OSCR)

Have a great day of golf and support a great local charity!

To book or find out more, contact:

[janine.davies@archway.org.uk](mailto:janine.davies@archway.org.uk)

Please share with anyone who may be interested – your support makes a real difference.



# LONDON

## GOING FOR GOLD!

Good luck to our Golden Bond London Marathon runners – Elizabeth Forsyth, Chris Carr, Ashleigh Simpson, and Archway mum Kelly Cruden and Iain Grigor who got a ballot place and is raising funds for Archway.

Despite some challenging weather, they've remained committed to their training and are working tirelessly on their fundraising too.



## SHAUN'S SANTA RUN BOOSTS ARCHWAY!

A huge congratulations and thank you to Shaun Sinclair (and his family) who took part in the Santa Run and raised an incredible **£1,300** for Archway!



## SAVE THE DATE



OUR TASTY

## Strawberry Tea Fundraiser

at Cults Outreach Centre on  
27th June from 10am - 12 noon.

We hope you can come - and if you are a baker or can help on the day, please contact Janine.



Thanks also to Kirsten at CrossFit Aberdeen whose CrossFit Challenge Event raised almost **£600** for Archway.

CROSSFIT **A** ABERDEEN

# FUNDRAISING NEWS

Archway is currently facing some of the most difficult and uncertain times in our history.

Rising costs, and ongoing pressures on social care funding mean that fundraising is no longer simply about enhancing lives – it is now essential to sustaining the core services that those we support depend on every single day.

We are seeing firsthand how vital your support is.



## WHAT DIFFERENCE DOES IT MAKE?

Thanks to fundraising and your generosity over the past few months, we have been able to contribute over **£50,000** to support so many vital projects including:

- Continuing the refurbishment at Dyce – including replacing a bathroom, fitting new flooring and bedroom furniture, and upgrading essential appliances
- Purchase a sensory Rainbow Table for Westburn Road
- Install new flooring in the activity room at TMC
- Keep our minibuses on the road
- Host our wonderful Christmas party enjoyed by everyone
- Keep holidays at Betty's Place as affordable as possible
- Support residents to enjoy special holiday experiences
- Provide toys, games, craft materials, and fund regular outings and activities



Every pound raised, every pound donated, every partnership formed makes a difference.

You can donate at [www.archway.org.uk](http://www.archway.org.uk) or contact Janine at [giving@archway.org.uk](mailto:giving@archway.org.uk) to learn more about how you can help.

# HOW YOU CAN HELP



There's lots you can do:

- Tell people about Archway and what we do and ask for their support
- Nominate Archway at work
- Set your own sporting, or other challenge
- Ask for donations to Archway in lieu of occasion or birthday gifts
- Make a donation or set up a regular monthly donation plan or remember us in your will
- Support our fundraising events.

## GIVING REGULARLY



A huge thank you to those families and other individuals who have set up standing orders and give monthly. These donations add up and make a lasting impact.

If you would like to start giving regularly please visit our website [www.archway.org.uk](http://www.archway.org.uk) or contact Janine at [giving@archway.org.uk](mailto:giving@archway.org.uk)

## Archway Charity Shops

Our Charity Shops continue to do a fantastic job raising much-needed funds. A huge thank you goes to our dedicated volunteers and managers. And of course, we couldn't do it without you either.

We need a continuous supply of good-quality clothing, household items, bric-à-brac, jewellery, handbags, shoes, and accessories are the lifeblood of our shops.

Every item you give helps us continue supporting those who rely on Archway. You can drop off donations at any of our shops:

- **Aberdeen** 95 Rosemount Place
- **Banchory** 68 High Street
- **Stonehaven** 56 Barclay Street



Please spread the word to family and friends too – every donation makes a difference.

You can find us on social media and the internet:

 [www.facebook.com/archwayaberdeen](http://www.facebook.com/archwayaberdeen)

 [www.instagram.com/archwayaberdeen](http://www.instagram.com/archwayaberdeen)

 [www.twitter.com/archwayaberdeen](http://www.twitter.com/archwayaberdeen)

 [www.linkedin.com/company/archwayaberdeen/](http://www.linkedin.com/company/archwayaberdeen/)

If you would like to speak to us about any fundraising idea you may have contact Janine on 07833 208089 or email [janine.davies@archway.org.uk](mailto:janine.davies@archway.org.uk)

 YouTube

We are also on YouTube – search for Archway Aberdeen



**archway**  
care + support built around you

