



2020

ANNUAL REPORT

Archway Chairman's Report

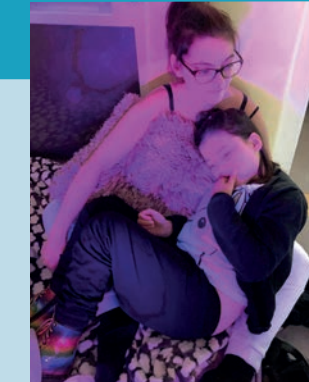
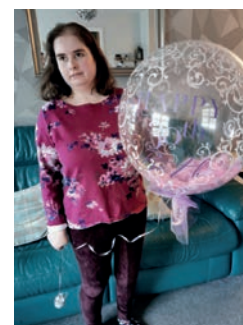
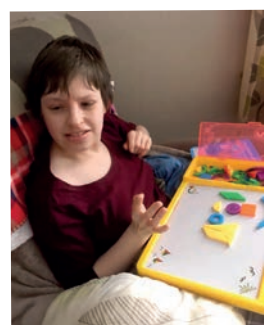


This is my first Annual Review as Chairman of Archway (Respite Care & Housing) Limited. The last year has presented us with some significant achievements, challenges and opportunities.

The establishment of the Supported Living service at St Margaret's Place has been extremely successful and is a great credit to the Staff, Directors and Families who have made this possible. Following this success the most common question we hear is "when will you build the next one?"— more of this later.

All our services have continued to provide excellent care and support to Service Users for both Permanent and Respite Care, although the latter has been severely disrupted by COVID-19. As the Pandemic began, we established the Coronavirus Subgroup to coordinate guidance and provide clear leadership at a time of great uncertainty, and Staff and Directors have responded incredibly in these challenging times. We have seen huge commitment to maintain services and to develop innovative and socially distanced alternatives, using technology.

During the past year we have been looking at how we can continue to develop new services, responding to the challenges of financial uncertainty but maintaining high standards. We are committed to develop a new supported living service, every 3 years, and we are also committed to develop alternatives to Residential Respite to enhance and complement existing respite services.



The impact of the Pandemic on services has made the need to create new and alternative resources more important than ever. The Management Committee has recently agreed to release funding to increase our management capacity which will enable this to happen. We are also members of the newly established Granite Care Consortium which has been successful in being awarded the tender to provide Care at Home services in Aberdeen City.

Finally, can I express my thanks to Directors, Staff, Volunteers, Families and Supporters for their hard work and dedication over the last year.

Alan Pilkington
Archway Chairman





Welcome from our General Manager Emma Watson

It's that time of year again when we look back on what we have achieved over the last year. In our last annual review, I reported that 2018-2019 had been one of the busiest. This year has also proved to be just as busy, and challenging at times, with the COVID-19 pandemic hitting us all in March.

Whilst this certainly put a different end to the year that what we had envisaged, it also reminded me how great our Archway team are, so I will start by saying a huge big thank you to all our staff and managers who have worked so hard in very different and difficult circumstances over the last few months – it is very much appreciated by myself and I know by the families of all the people we support too.

Thanks must also be extended to our Board members, Janine (our Fundraising manager), our Charity Shop managers and volunteers, all our service users and their families as well as all of our supporters, funders and commissioners, for all you have done and your continued support throughout the year as well as during the difficult times we have all experienced recently.

We had expected our focus this year to be all about celebrating our 30th anniversary and sadly we haven't been able to do this the way we had planned but I am sure we will celebrate this another time as we all like a party here at Archway!

Despite the impact of coronavirus on the last few months our year was still fruitful!

Way back in June last year, after a lot of hard work and by working closely with colleagues from Aberdeen City Health & Social Care Partnership we were really pleased to open our first supported living service at St Margaret's Place. Feedback from families and everyone that has been to the service has been great. So much so that we are planning to build on this success and develop more supported living services in the future.

At the same time as opening St Margaret's Place we also reconfigured our Berryden Mills service which became all permanent care. With these changes and our new development, we have grown our permanent care



services from supporting 12 residents to 20! We know how important the next step is for the people who use our respite services and their families, so it is great to be able to develop these services in line with the needs of the people we support.

During the year we continued to provide permanent care at Westburn Road and our 3 residential respite services also continued to provide respite breaks to over 150 children and adults and their families.

Our 7 till 9 Club continues to be popular, so much so it has continued online over the recent months as well as a programme of other online activities and coffee mornings so that we can keep in touch with everyone despite coronavirus.

Our Holiday Home at Nairn continues to be popular with our families and residents. It's great to see all the lovely feedback and photos that are shared with us, and our Charity Shop has also continued to be busy and successful despite having to be closed for a few months during the pandemic.

Behind the scenes we have updated our finance systems and are moving towards using an online recruitment portal. We hope to have this ready to use in the next couple of weeks. We continue to be involved in local provider forums and have been part of a local group looking at the development of a training passport for social care staff across the area. We

also set up a Charter for Involvement group to begin looking at how we can further develop our service user involvement procedures and we hope to sign up to the Charter in the near future.

At the end of last year, we said farewell to Tom, who was our Operations



Our Vision



Archway's purpose is to create a network of care which supports the individual and the family, values their uniqueness, upholds their rights and respects their dignity.

Manager. Tom left, after working for Archway for nearly 30 years, to spend more time at home with his family.

We were really pleased a couple of months later to be able to announce Angi as our new Operations Manager. Whilst her first few months in post have been somewhat different to what we might have planned I wish her every success in her new role, and I know that she is looking forward to getting to know everyone at Archway over the next wee while.

I started off this time by saying thank you – and I will end on saying thank you again. Without all our service users, families, staff, board members, volunteers and supporters Archway wouldn't be what it is – so thank you for all that you do to make Archway the great place that it is.

I am very proud to be able to call us all TEAM ARCHWAY!

Emma Watson
General Manager



Meet The Board



Mike Bowyer

Now retired, Mike worked in the oil and gas industry for almost four decades in a variety of roles including MD of PES and UK VP of Halliburton. During his career he was involved in quite a few industry committees (and work groups) and for two years was a Board member of Oil & Gas UK. Most recently he served two 3-year terms

as a non-executive board member of Aberdeen Harbour Board and chair of its Audit & Risk Committee. A graduate of Aberdeen University he is a chartered engineer and chartered director. Mike is married to Frances (whose brother is Lawrence Morrice). Mike was appointed as a Trustee Board Member in 2019.



Dr Brian Brock

Brian was appointed as a Director in January 2017. Brian is a Professor of Moral and Practical Theology at the University of Aberdeen. He is also the father of Adam, a regular visitor to Westburn Road for respite, and who has Down's Syndrome and autism. Brian has written a wide range of scholarly essays on themes related to disability

and is a Managing Editor of the Journal of Disability and Religion. His most recent books are Wondrously Wounded: Theology, Disability and the Body of Christ (2020), and Disability: Learning to Live as the Diverse Body of Christ (2021).



Ed Gardyne

Ed was appointed as Director in January 2017. Ed was born and brought up in Banchory, Aberdeenshire. He graduated with a Science degree from Aberdeen University and is a Chartered Engineer and a Member of the Institute of Measurement and Control. He founded his business Safewell Solutions in 2005. Ed is married

to Elizabeth and they have a grown-up family of three including Hannah who was born prematurely in 1993 and has severe development delay and epilepsy. Hannah has been going to Dyce for respite since 2001.



Roger Hessing

Roger was one of the original members of the steering group that was set up in April 1983 by Betty Sheldon, who went on to become the first Chairman of Archway. He was appointed as a Director

and Company Secretary on Archway's incorporation in April 1986. Roger has a son with Down's Syndrome. Roger is now retired having worked in numerous roles in the administration and logistics departments in the oil industry. Roger was a Director and Secretary for The Manor Project for a number of years and was on the Board of Inspire (Partnership through Life) until October 2015, both being voluntary organisations providing accommodation and services to people with learning disabilities.



Alan Milton

Alan was born and raised in Aberdeen. He studied Chemistry at Aberdeen University and graduated BSc/PhD in 1970/1975. He joined Wiggins Teape (now Arjowiggins), Stoneywood

Mill in 1973 direct from university and worked for that company in Aberdeen and South Wales for 40 years before retiring in 2013. As the Technical Manager for a specialised business sector, he also spent the last 30 years of his working life travelling worldwide. He has a son, Andrew, born in 1976 with Downs Syndrome. Andrew is a respite user at Westburn Road. Alan is married to Margaret, formerly a Principal Home Economics Teacher, and in addition to Andrew, they have another younger, married son and daughter, one grandson and two granddaughters. Alan was appointed as a Director in March 2019.



Thelma Morgan

Thelma was one of the original steering group which was set up in April 1983 and was appointed as Director in April 1986. Thelma has a daughter Lesley who went to Westburn Road for respite when it opened in 1990, she moved into St Margaret's Place in 2019 when it opened. Thelma retired in 2006 having worked for Aberdeen City Council as an Area Officer and Assistant Registrar.



Lawrence Morrice

Lawrence was appointed as a Director in May 2014. He retired in 2010 after working 33 years as an agronomy consultant with the then SAC (Scottish Agricultural College). Lawrence has a son Paul, and a daughter Kirsteen who was born in 1978 who has a genetic abnormality that causes muscular incoordination and epilepsy. Kirsteen used our shared care service until 2019 and is now happily settled in permanent residential care at St Margaret's Place.



Alan Pilkington

Alan was appointed as a Director in September 2006, having been a member of the original steering group and a Member of Archway since inception. He retired from Aberdeen City Council in April 2006, having held a number of senior social work posts over a 34 year career including Head of Service responsible for Community Care Services. In May 2007 Alan took up post as General Manager for Combined Child Health Services with NHS Grampian, retiring in September 2012. Alan is also a Director of Charlie House and a member of Castlehill Housing Association Management Committee. Alan became Chairman of Archway in April 2019.

Our Values

- Encourage individuals, families and staff to participate in decisions relating to the Service
- Place the individual and family at the centre of its work
- Provide a stimulating and safe environment
- Promote the well-being of the individual
- Strive to ensure continuity of service
- Act with openness and honesty
- Conduct all business in a professional and businesslike manner, with emphasis on financial control and professional standards of care and management.



Meet The Board



Jim Sangster

Jim first became associated with Archway in 1983 as finance officer and on Archway's incorporation in 1986 became its first Finance Director. Jim

succeeded Betty Sheldon in 1996 as Chairman. Jim's daughter Anna has been using Archway's services since they began and now stays in permanent care at Berryden Mills. Jim spent most of his career in the oil industry where he assumed various financial roles in Shell and was a partner in Lancaster Consulting before his retirement in early 2016. Jim was Chairman of Archway until April 2019, when he became Chairman of Archway Charitable Trust.



Kenny Simpson

Kenny became a Director with Archway in October 2002. Kenny's daughter Laura attended Two Mile Cross for respite before moving on to shared

care at Berryden Mills, she now lives at Berryden permanently. Kenny has had involvement with other voluntary organisations that have an involvement with disability issues. Kenny worked at Aberdeen City Council for a number of years in the building standards department and at Aberdeenshire Council as Building Standards Manager. He is now retired.



Hilary Smith

Hilary was appointed as a Director in May 2007. Hilary's daughter Catherine has cerebral palsy and epilepsy and is a service user at Dyce. Hilary has worked as a Director of a Recruitment Consultancy and latterly as a lecturer for the Business School at The Robert Gordon University. Hilary is currently a full-time carer for her daughter.



Dave Stanley

Dave was appointed as a Director in May 2014. Dave studied BSc Electrical and Electronic Engineering at RGIT (now RGU) and had worked in a variety of operations, sales and project management roles in the subsea robotics industry. Before retiring Dave was Project manager at Fugro in

Aberdeen. Dave's daughter, Beth, born 1990, has severe developmental delay and had been a user of Archway services at Two Mile Cross for several years before moving into shared care at Berryden Mills in 2014 and staying there permanently in 2019.



Richard Woodhouse

Richard is from Speyside and has a Chemical Engineering degree from Heriot Watt University. He has worked in oil and gas since 1995 for Shell and other smaller companies and is currently managing director of Dundas Consultants Ltd which he founded in 2011. Richard and his family

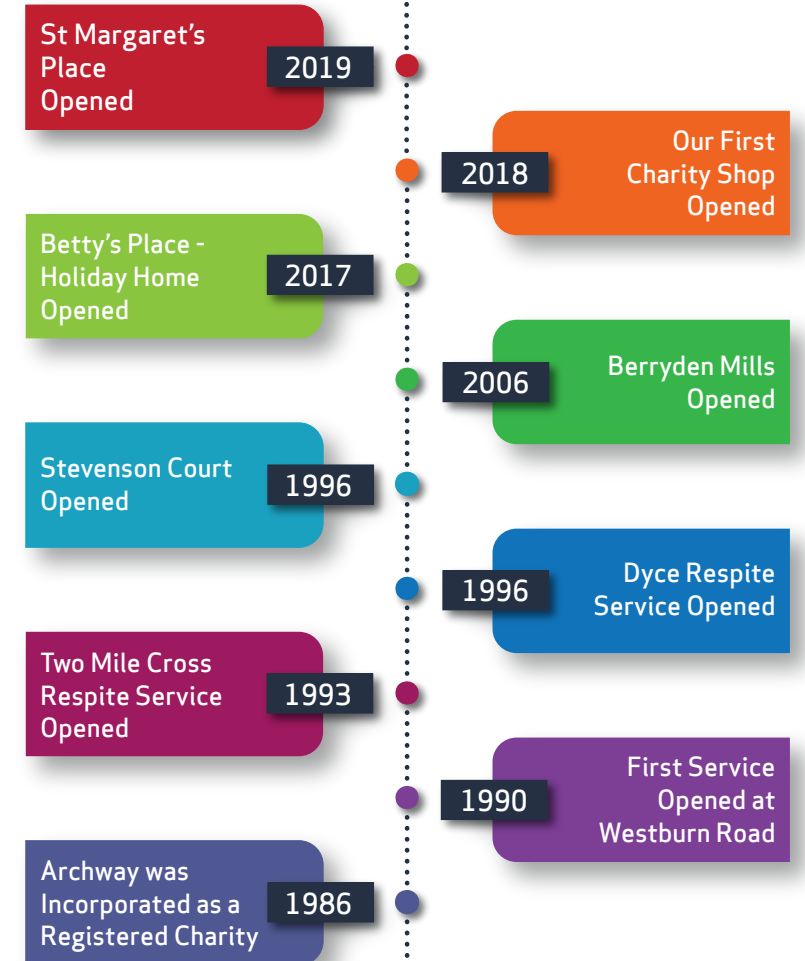
became part of the special needs community in 2002 when their first child Katie was born with severe disabilities. Richard and his wife Helen cared for Katie until she died suddenly aged 8. Richard was appointed as a Trustee Board Member in 2019.

Archway 1990 - 2020

Celebrating 30 Years of Care and Support

It's our 30th Anniversary this year. Here are just some of our highlights from along the way!

What we do is amazing - we want to do even more in the future!



Care Inspectorate Feedback

We are really pleased to continue to receive such positive feedback from the people who use our services and the positive grades we receive from the Care Inspectorate.

In 2019/20 our services received the following grades:

Two Mile Cross

Quality of care and support



Quality of environment



Berryden Mills

Quality of care and support



Quality of environment



Westburn Road

Quality of care and support



Quality of staffing



Dyce

Quality of care and support



Quality of management and leadership



“ My son has attended Westburn Road for respite for the last 30 years. He has loved his stays ... it has been a huge benefit to him and me. I can't praise Archway highly enough. ”



“ I feel staff listen to me if I need to discuss something about my relative ”



“ The support plans are drawn up in conjunction with our family and are updated regularly therefore reflect clearly what our child wants and needs ”

“ We are very happy with the service. They are very approachable and are very person centred in their approach. ”



“ X could not be happier with the service she receives ... the attention she receives is second to none ... nothing is too much effort for the staff ”



“ Very good, excellent ... the carers are all lovely ”



“ Staff are helpful and encouraging and very supportive ”



“ Opportunities to strive for excellence were being taken within a culture of continuous improvement ”



“ My relative is very happy at the service ”



About Us and What We Do



Archway is a parent-led charity based in Aberdeen providing care and support to children and adults with learning disabilities and their families.

Archway was founded in Aberdeen in 1986 by a group of parents of children with learning disabilities and our first service opened in 1990. 30 years later we are proud to continue to be a parent-led organisation ensuring that everyone using Archway has a real say in how our services are provided.

Permanent and Respite Care

We provide a range of community-based services which includes permanent care, supported living, residential respite and day activities. We currently support nearly 200 children and adults with learning disabilities and their families.

Over the last few years, we have continued to grow and develop expanding what we can offer to our families.



7 till 9 Club

In 2018 we began to support the 7 till 9 Club – which is a weekly social club for adults with learning disabilities. The Club offers a range of activities such as bingo, games, pool, karaoke and more as well as an opportunity to have a catch up and socialise with friends.

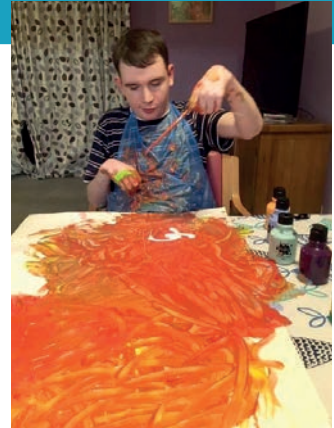
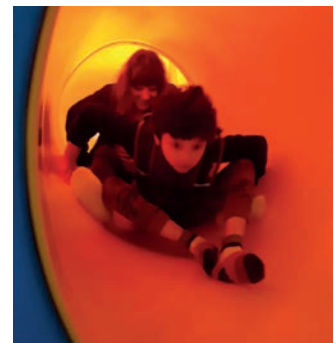
www.facebook.com/7till9ClubAberdeen

Betty's Place

In 2017 we purchased Betty's Place, a wheelchair accessible holiday home at Lochloy Holiday Park in Nairn. It is available throughout the year for all our service users, residents and their families to enjoy. Bookings can be made online via our website.

Online Activities

During lockdown we introduced a range of online activities and coffee mornings to keep in touch with our service users and their families. A private Facebook group was also set up.





Archway Mum Gail Tells Us Their Family Story

When Martin and Gail Cruikshank's beautiful baby girl, Jodie, contracted a life-changing infection, the family's life was turned upside down, inside out and they felt they had just fallen off a cliff. Jodie was alive. But what the future held for her - or for them - no-one knew - and that future was a very scary place.

Here Gail tells us their family story

Until she was 19 months old Jodie was just a typical, happy toddler, walking, beginning to say a few words. Our first child - and the first grandchild in the family - she was adored by all of us and gave us all so much joy. Then she got flu which brought on a prolonged fit. She had contracted post-infectious encephalitis - a condition that attacks the brain. Symptoms can include physical problems, speech problems, and epilepsy and our baby girl had all of them. It's hard to describe how completely devastating, heartbreaking and overwhelming it was to get that news. But we could have lost her, and we were just so grateful we still had her, and we were determined to do everything we could for her. The hope was that because she was so young, she would recover much of what she had lost but sadly this was not to be.

Jodie celebrated her 18th birthday this year and still needs the same care she did all those years ago. She is confined to a wheelchair and needs support to sit up. She can enjoy little tasters of food, but she is mainly tube fed. She can't speak, but she has a wicked sense of humour and had a very special relationship with her Grand-dad.

When the children were smaller, we did everything together as a family but as they have grown up and developed their own interests and hobbies this has become much harder. Jodie can't be left alone so Martin and I take it in turn and have the usual parent guilt if we miss something that is important to Adam or Fay. We love them all - it's just that Jodie has the greatest need, and we have to put that first.

When Jodie was small, a friend whose son goes to Archway told me about the charity and what a lifeline it was to them. I put Jodie's name down but then for many years, looked for every single excuse I could think



of not to take up a place when it was offered to me. When a place came up at Dyce - I had run out of excuses and agreed to give it a try.

At first, I couldn't relax, I had to be at the end of the phone in case I was needed or had to go and get her - what if something happened? But I was worrying for nothing! The Archway staff soon reassured me and got to know her so well I knew she was safe with them. Gradually I began to relax and we took advantage of the break to spend time with Adam and Fay doing what they wanted to do.

As her Mum, I feel for the things Jodie is missing out on - the things a girl her age would be doing, what her life would have been like, the friendships she would have made. But she is happy - and we do everything we can to help her get the most out of her life as it is. It has been a real family effort. Martin does as much as me to care for Jodie and my Mum and Dad were amazing supporting us all the time but especially when we needed it most. Now we have



lost them we rely on Archway more than ever and I don't know where we would be without them.

"Knowing Archway is there means so much to us"

We know that Jodie is not only safe and well cared for at Archway but that she is loved and understood. She can spend time with her own friends, do her own things like a girl her age should be doing and we can just relax, focus on Adam and Fay and do the things most families just take for granted. I can't envisage a time that we won't be caring for Jodie at home but now I can't envisage life without Archway.





A special thank you to:

EnQuest, The John Gordon Memorial Trust, Mr Lawrence Findlay, The Budge Foundation, The Miss Caroline Jane Spence Fund, AUSA RAG Campaign and all the other companies, groups and individuals whose generous donations and support made this project possible.

A Special Year at St Margaret's Place

St Margaret's Place - our new Supported Living Service opened in June 2019 and it's been a wonderful first year for the four ladies who live there!

The property itself was purchased in 2018 partly with the proceeds of a generous legacy left to us by Betty Sheldon (Betty was the inspiration behind Archway and our very first Chairman back in 1986) along with donations from key corporate supporters including EnQuest, families and individuals and our own fundraising efforts through Betty's Fund – named in her memory.

Months of hard work, and an additional £150,000 - raised through a special Appeal – funded all the redevelopment needed to turn it into our first Supported Living Service – and it has all been worth it!

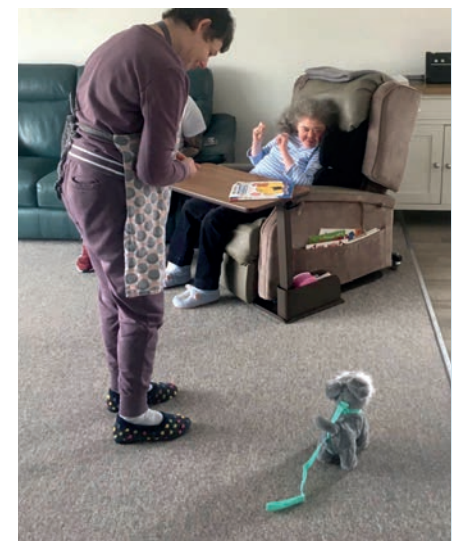
Rhona, Lesley, Nicola and Kirsten moved in last June and their first year living at St Margaret's Place has been great. They all settled in really quickly and love being part of their local community. They live as independently as possible with the 24-hour support from staff that they also need. They are all enjoying living together and have become great friends. Before lockdown it was hard to catch them at home – they were always out and about shopping and socialising.

During lockdown staff have worked extremely hard to keep everyone not only safe and well but happy and busy and just as active at home and in their lovely sunny garden.

Such has been the success of St Margaret's Place that we are already planning to open another Supported Living Service in the next three years. We have just launched a major £250,000 Appeal to ensure more people with learning disabilities can benefit from this kind of care and support and live rich and rewarding lives.



“ Lesley is so happy. She has settled in really well. The house and staff are amazing it is better than we ever dared hope for and I just wish everyone else could have this. ”





Andrew's Story

When Andrew hit a difficult time in his life, Archway was there for him and his family.

Hello. My name is Andrew. I live with my Mum and Dad. I have a younger brother Peter and younger sister Jennifer, two nieces Stella and Sophia and a nephew Sebastien.

I was born in Aberdeen, but we lived in Ellon. We moved to Wenvoe in Wales when I was small. I went to school nearby in Barry and really enjoyed it, especially since it also gave me the first taste of respite away from home.

We moved back to Aberdeen and after a short time at Beechwood I attended Cornhill School for 2 years before going to St Machar Academy for a further 3 years. I made some amazing friends at both schools and really enjoyed my time there. After school I went to Aberdeen College for 2 years. I did an agriculture course at Clinterty learning woodwork and looking after animals and even baking which I still love!

After College I went to the Rosehill Centre and learned how to become more independent. I learned how to cook and to shop - and how to get about on the bus on my own. My keyworker helped me find a job at Fox Lane Garden Centre (before it moved to Westhill) and we worked out how I could get the bus and get myself there in the morning.

I still work there 4 days a week, but independent travel is no longer possible. I help grow the plants and repot them when they need bigger pots and help customers take their plants to their cars. I have a nickname there - Snappy - because my favourite biscuits were ginger snaps and I had red hair (when I was younger)! It's hard work but I like meeting people and really enjoy it there.

When I am not at work I love listening to music, drawing and colouring in. I really enjoy looking through recipe books for new recipes to try and bake. I have my own man cave next to my bedroom where I can watch TV, look at my iPad and draw.

I am also on the Committee of our local Downs Syndrome Association and enjoy doing lots of things through the Association including having golf and tennis lessons.

About 10 years ago I had to have an operation on my ears which went a bit wrong. It changed me - affected my personality and affected my



ability to do some things I could do before. I couldn't sleep anymore, and I couldn't travel on my own. I got depressed. It was bad for me, but it was also bad for Mum and Dad too as they weren't getting any sleep either and were worried about me.

That's when we found out about Archway. Mum says it saved our lives and this was the first time that we experienced respite care in Aberdeen after returning 24 years ago. I love going there - it's my favourite place in the world and Mum and Dad are happy because they know Archway look after me like they do.

When I go to Westburn Road, I can be independent again and spend time with my friends. We go out in the minibus - sometimes to the beach for fish and chips. We bake and have lots of fun. There is always someone there to talk to me and make sure I am okay in the middle of the night.

I like Irene and Hazel who work there and my friends Jackie and Alison. Sometimes I stay longer at Archway when Mum is going away to look after my nieces and nephew, and I like that.

Every time I get home, I ask Mum when am I going back? I pack my case two weeks before I go so I am ready. Mum and Dad get a chance to get a few nights sleep and just a few days to themselves without looking after me.

I love my Mum and Dad very much but hope someday I will be able to live at Archway with my friends - until then I will keep my Archway bag packed and ready.

Our Aims

The primary aims of Archway are:

- To provide or facilitate support for families using Archway services at all stages of our service users' development
- To work together to ensure the provision of homely residential accommodation for adults with a learning disability that offers care and consideration for their physical, emotional and social needs
- To provide homely shared and extended care to help service users and their families engaged in the transition to adult living
- To provide homely accommodation for short-break care to people of all ages with all degrees of learning disability in order to share the task of caring with their relatives.



Archway Charitable Trust Chairman's Report



I hope you are enjoying reading our - Annual Review. As followers of Archway you will be aware of the growing importance of fundraising to the quality of services we offer.

Among other things we use these funds to replace furniture and fittings in our Units on an as needs basis, provide transport through the purchase of suitable vehicles, give funds to the Units to allow our users to enjoy days out and organise events and contribute to giving our permanent residents an annual holiday. As some of you may recall Betty Sheldon, the driving force behind the establishment of Archway, left us a legacy many years ago which we refer to as Betty's Fund. Over the years we have added to this fund and it is now used to provide additional permanent accommodation for our users through our Supported Living Service which started in June 2019 at St Margaret's Place in Aberdeen.

In order to distinguish our ongoing fundraising activities from that of providing Care Services, which was the reason Archway came into being, the decision was made in 2017 to look into ways in which the two distinct roles could be separated, yet the ethos and direction of Archway maintained. After much deliberation and advice it was decided that this could be best achieved by establishing a new charity, Scottish Charitable Incorporated Organisation, (SCIO). This idea was progressed until in October 2018 Archway Charitable Trust (ACT) came into being and became the parent company and Archway (Respite Care and Housing) Limited (ARCH), its subsidiary.



Although both charities are separate legal entities, both continue to work for the benefit of Archway, its users and families, and are committed to providing a quality service in co-operation with the local authorities and other funding bodies.



Since the last review residents at our house at St Margaret's Place have settled in well to their new surroundings and the premises is fulfilling all of their expectations. The house was largely purpose built and adapted to the resident's current needs and those of the future and has been furnished to a standard which offers both comfort and practical solutions to their specific needs. The opportunity to enjoy the fresh air and sit out in the garden has been a real bonus at a time of the restrictions brought about by Covid 19.

The holiday caravan at Nairn was well used throughout the 2019 season and although the 2020 season got off to a late start due to the virus, things have begun to pick up and bookings for the rest of the season will see it well used.

The charity shop in Rosemount had a very profitable 2019/20 year thanks to the efforts of our volunteers and management team, both in the shop and at Westburn Road. The success of the shop in generating funds is due in no small measure to the quality of what is being sold, its presentation and pricing and thanks must go to all concerned for the friendliness and approachable manner in which the shop is being staffed.

Covid 19 has had a significant impact on everyone's lives and the way in which business is now conducted and Archway is no exception.

A tremendous amount of work has been done throughout the organisation to ensure we operate all of our interests to the highest standards.

Needless to say Janine and her team are working hard to ensure our fundraising efforts continue to be successful in these most trying times.

Jim Sangster

Archway Charitable Trust Chairman



Archway 30th Anniversary Appeal

Celebrate your own Special Anniversary/ Birthday and ask for donations to Archway instead of gifts



Nominate Archway for support at work, at your community group, club or church



Leave a Legacy in Your Will

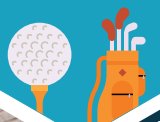


Make a donation - and Gift Aid it if you can



Donate good quality clothes and household items to our charity shop and encourage 3 friends to do the same

Take a team in the next Archway Charity Golf Day



Join Team Archway at the next Kilt Walk



Volunteer at our Charity Shop for 30 hours



Take part in an organised event and fundraise for Archway



Organise your own fundraising event at work or home



We thought 30 years of care and support was worth celebrating with a special £30,000 Anniversary Appeal.

Launched in February this year, the funds we hoped to raise were going to be used to make sure everyone coming to Archway enjoyed the celebration through a special family event, special anniversary outings and activities and a major refurbishment of our Two Mile Cross respite service.

While in many ways the Appeal has been a casualty of the COVID-19 pandemic with lots of fundraising and other events, activities and celebrations cancelled or postponed, families and supporters have rallied round and come up with new ways to support the Appeal. Over £15,000 has been raised so far and the refurbishment of Two Mile Cross has been completed. As lockdown is easing in the second half of 2020, we are hopeful that fundraising will continue and the planned celebrations and events will be held later when everyone is able to participate.



Archway Fundraising

While the last 12 months have not gone entirely as planned, I would like to extend my heartfelt thanks to all who have helped make the last year an amazing time regardless and hope this latest Review finds you and yours safe and well!

In 2019, through the Archway Charitable Trust, over £150,000 was raised. This was used to benefit everyone across all Archway's respite and residential services and funded special equipment, vehicles, outings and activities, craft materials, games DVDs and much more.

Funds raised were also used to redevelop St. Margaret's Place, our first Supported Living Service that opened in June 2019.



Lesley and Hannah cleaned up for Archway with a fundraising Norwex Demonstration



Betty's Place - our Holiday Home at Nairn purchased in 2018 - continued to be enjoyed by Archway families and Archway residents throughout the year and our Christmas party welcomed almost 160 families.

We organised our own fundraising events including a Golf Day and Fashion Show, had a team of 20 in the Aberdeen Kiltwalk and our Charity Shop continued to contribute to our fundraising efforts.

We were also fortunate to benefit from events, donations and grants from a number of companies, groups, community and business organisations, Trusts, families and individuals, and we cannot thank everyone enough for their support.

At the beginning of 2020 we were set to launch two new fundraising initiatives. The first was our 30th Anniversary Appeal to raise £30,000 to celebrate 30 years year of providing care and support. The second was to build the foundation for our next major Appeal to raise £250,000 so we can open another Supported Living Service by 2023. Just a few weeks after launching our Anniversary Appeal, lockdown was introduced.

While respite services were suspended, our focus was on keeping our permanent residents safe and well, but we also had to look at the fundraising implications for

Archway going forward and the damaging impact the virus has had on that.



A collection of Roman artefacts donated by Mr Lawrence Findlay were auctioned at Bonhams in London

Archway Fundraising . . .

We like many other charities have been adversely affected. Our Charity Shop had to close, all our own fundraising events and activities, and events being organised on our behalf, or that we were set to benefit from, were also cancelled. Much of the fundraising done for us by others was curtailed too.

But we have to plan for when this horrible time is behind us so we can have the funds in place to do all the things that make life better for everyone coming to Archway.

We have some new fundraising initiatives in place, our charity shop has re-opened and we hope that we can stay on target to open our next Supported Living Service in 2023.

We are enormously proud to be celebrating 30 years of caring. With your continued support we will continue to make a difference and give children and adults with learning disabilities the best possible care and as many opportunities as we can so they can get the most out of life.

Janine Davies
Fundraising Manager



Our Kiltwalk Team made up of BNI Alpha members and Archway families raised almost £6000



Safewell held a Halloween themed Bake Sale in their offices for Archway



Wool For Ewe held a special event in the store and donated the proceeds to Archway (below)



Laura had a Frozen themed 30th Birthday Party and asked for donations to Archway instead of gifts



Spirit Energy did a garden make-over at Westburn Road and Two Mile Cross

Aberdeen Students Raising and Giving Campaign supported our St Margaret's Place Appeal and funded a mobile sensory unit



. . . Makes a Difference



Archway Charity Shop



The last year saw some changes and unexpected challenges at our Charity Shop. We said farewell to managers Hilary and Dolina and welcomed new managers Kelly and Jan. Both have brought their drive and enthusiasm to the shop and helped us raise even more funds for Archway during our second year of trading.

We would not be able to operate without the support of our amazing volunteer team who all work so hard to ensure the shop looks incredible at all times – and offer a warm welcome to all our customers many of whom are now regulars!

There is a lot of work sorting, steaming, cleaning and moving done behind the scenes to make sure the shop works efficiently – and while this may look effortless on the shop floor, we know how hard our volunteers work to achieve this and really cannot thank them enough.

We are so lucky with both the quantity and quality of donations given to us on a daily basis and again we would like to thank everyone who supports us in this way.

As well as raising funds, the shop has also provided some volunteering opportunities for some of our Archway service users. As well as Emily and Nicola,

we were delighted to welcome Davey and Carolyn, Westburn Road residents to our Volunteer team. We also continue to work with Orchard Brae School to offer work experience placements for final year students and Becca – who comes to Archway for respite breaks – was our most recent placement – and a great job she did too!

From an amazing start to the year, with plans to hold a second bigger and better Charity Shop Fashion Show, our plans were turned upside down when the COVID-19 crisis hit. We took the decision to close the Charity Shop on the 21st March just before lockdown was imposed. It remained closed until the 13th July. The managers and volunteers did an incredible job getting the shop ready to reopen and customers old and new are now returning.

It will be a challenging year ahead, but the shop team are doing all they can to get the shop back on track.

**The shop is open:
10am – 4pm Monday to Saturday.**

**Donations of good quality clothing,
household items, jewelry and
handbags are always welcome.**



Betty's Place – Where Memories are Made



Archway families and residents continue to enjoy Betty's Place, our specially adapted holiday caravan at Loch Loy Caravan Park at Nairn, purchased through our Betty's Fund Appeal in 2017.

Right on the beach but within walking distance of the town centre and with lots of great facilities on site including a pool, restaurant and shop, it's ideal for everyone – even those using public transport.

“Thank you so much for allowing us to holiday at Betty's Place. It was the most beautiful weekend. Kayleigh and I had a lovely time and felt safe during these tricky times.”

Through continued fundraising, we keep costs to families extremely low so as many families as possible can enjoy it.



“We had a super holiday up at Betty's Place, the caravan was lovely, clean and comfortable and there was plenty to do around the area. We had beautiful sunshine all week and were really able to make the most of it.”

The caravan is available to book from 1st March – 30th November for short breaks and week-long stays.

More information can be found on our website www.archway.org.uk/service/holiday-home/



Meet Our New Archway Ambassadors

At the beginning of 2020 we introduced our new Archway Ambassadors Scheme. Our hope is that the Ambassadors will make a positive contribution in many different ways and at many different levels by bringing their own skills, networks, experience and enthusiasm to raise awareness and encourage support of Archway.

We are delighted to introduce our new Ambassadors to you. All have been fantastic supporters of Archway in the past and we are so pleased they have agreed to give up their time and their talents to support us going forward.



Craig Donaldson

Craig is a Subsea Project Manager at BP. Since 2013 Craig has co-ordinated hugely successful annual BP volunteer Make-Over Days at Archway Dyce and Two Mile Cross as well as completing a number of marathons while raising funds for Archway. He has also

committed to donating 30 volunteer hours to the Charity Shop to support our 30th Anniversary Appeal. Craig is married with 2 children and 1 grand- daughter and in his spare time enjoys football, running and generally keeping fit. Craig feels it is a personal privilege to be able to support Archway as an Ambassador and will continue to help in any way he can.



Carol Fowler

Carol has been a great supporter of Archway for a number of years. She has enjoyed a long career in hospitality and event management. Through her company, Prime Event Management, she has organised many major corporate and community events throughout the region

including Taste of Grampian. As co-owner of Banchory Lodge Hotel, in the last 7 years, she has succeeded in refurbishing the property and turned it into one of top boutique hotels in the area. In her free time, Carol is a keen golfer and cook and enjoys travelling. She is also learning to speak French for her next French holiday! Carol is keen to lend her expertise to help develop new and innovative fundraising events for Archway in the future.



Alan Henderson

Allan is the proprietor of onshore catering business The Workshop UK, owner of The McGinty's Group, one of the North East's leading independent hospitality operators, and Chairman of Aberdeen Inspired. A former footballing buddy has a daughter who comes to

Archway which led him to become a long-time supporter through both his businesses. A keen golfer, Allan sponsors and takes a team in the Archway Golf Day every year and regularly holds fundraising events for Archway through a number of his premises. As an Archway Ambassador he hopes to encourage more companies to support Archway and lend his support to future fundraising events.



Margaret Lamont

Margaret has been an active member of the Charity Committee at EnQuest for a number of years and has been a long-term supporter of Archway. Through Golf Days, raffles, offshore activities, staff sponsored activities and office bake sales to name but a few, Margaret has helped raise, and encouraged many

others to raise, tens of thousands of pounds for Archway. In her spare time Margaret loves travelling and spending time with family and friends. As an Archway Ambassador Margaret is committed to continue to support Archway and encourage others to support us too.

While so many of the activities and opportunities our Ambassadors were going to be involved with have been postponed or cancelled this year, we know that our Ambassadors will make a valuable contribution in the future.



Neil McCulloch

Neil is Executive Vice President of EVP Technical and Operational Production at Spirit Energy and has over 30 years' experience in the energy industry. He is married with 3 children and a dog. In his spare time, Neil enjoys cycling outdoor and indoor. Neil got to know about Archway through his previous company. He found seeing the work and care provided by all was both remarkable and inspiring and is aware of how vital the service to families is. As an Ambassador he is keen to help in any way that will help the community and families that Archway supports.



Moira Murawiecka

Moira is the Business Development Manager at Safewell Solutions Ltd and has worked in similar and other business roles for over 30 years. Her hobbies include hill walking, cycling, cooking, gardening and travelling. She has 2 grown up sons. Archway is Safewell Solutions nominated charity and Moira has become involved and passionate about Archway through this. She is keen to promote Archway through her business connections and wider networks to increase awareness and support so that Archway can continue to provide its much needed services to families throughout Aberdeen and Aberdeenshire.

Our Objectives

- To understand and acknowledge that all our service users are individuals with rights and responsibilities
- To promote a feeling of safety, through good basic care and person-centred planning
- To include service users in decisions that affects their lives by encouraging them to express their opinions and ideas
- To plan activities, both in house and externally, that meet individual's interests
- To ensure the decoration and furnishings are homely and well maintained
- To maintain professional standards of care and management and financial control and to continually improve the standards of governance.



A Huge Thank You to all Our Friends

Our thanks to all the companies, groups and individuals who have supported us over the last 12 months including:

Main Corporate Sponsors



Corporate Supporters

Acumen, AG Fleming Construction, Bakers Incorporation – The Seven Incorporated Trades of Aberdeen, Bon Accord Glass, BNI Aberdeen Alpha, BP, Burness Paull Solicitors, R. Davidsons Joiners, The Design Room, Elmec Projects, J & I Investments, J & G Collie, John Mutch, M&S Stoneywood, Prime Event Management, No.10, North Offshore Ltd, RSM UK Ltd, Safewell Ltd, Securastore, Spirit Energy, The Spectacle Company, Stena, Taylors Auction Rooms, Tidy Green Clean, Thistle Windows, TK Maxx, TSB Dyce, The Trade Widows Fund – Seven Incorporated Trades of Aberdeen, The Workshop UK Ltd, Wool For Ewe.

Club & Community Support

Aberdeen Federation of Racing Pigeon Society, Aberdeen Probus Club, Aberdeen Rotary Club Dyce, Aberdeen Round Table, Chapel Chimers, Dyce & District Amenities Committee (Carnegie Hall), Oak Café, Old Meldrum Rotary Club, Peterculter Golf Club, St Margaret's School, The Clarsach Society North East Scotland.

Individual Supporters

Karen Allan, Steph Allan, Sheena Anderson, Belinda Ashcroft, Anna Aitken, Hazel Angus, Belva and family, A Cairns, Lynn Clarke, Jill Cooper, Alison Cowie, Fraser Cowie, Richard Cowie, Susan Deans, Heather and Jade Ellington, Fiona Entwistle, Paula Fogiel, Dr Peter Fogiel, Mrs Peggy Finnie, Lawrence Findlay, Andrew Forsyth, John & Kathleen Grainger, Pam Grainger, Kevin Gregor, Joan Henderson, Hermione Hetherington, Mrs Lind, Carole Lovie, A Matthews, Dr Matthews, Jen McBain, Jo McCarol, Lorna McDonald, Carol McGregor, Rachel Harold, Mrs McLeish, J.J. McKay, C.B. Miller, Mrs M Miller, Hitesh Mitchell-Mehta, Mr & Mrs Moir, Mr & Mrs A Morrison, Nicola Morrison, Kenny Morgan, Thelma Morgan, The Morgan Family, Ruth & Billy Moyes, Annette Munro, Francis Murray, David Rattray, Helen, Alan & Craig Rogers, Zena Robertson, Mr & Mrs J Sangster, Mr & Mrs A Skinner, Hannah Skinner, Elina Skudra, Mr & Mrs K Simpson, Laura Simpson, Sophia Siwek, Michael Sinclair, Lesley Smith, H Smith, Michelle Smith, Mr & Mrs D Stanley, Mr & Mrs Stark, Tom Starrs, Mrs Stevenson, Ishbel Sutherland, C Tarr, G Trengove, R Trengove, Lisa Thomson, Rev Watson, Nicola Wilson, Mr & Mrs Wilson, Stephanie Whyte.

Trusts & Charitable Organisations

The Budge Foundation, AUSA Rag Campaign, Cults Parish Church, Dyce Parish Church, Ferryhill Parish Church, Garthdee Parish Church, John Gordon Charitable Trust, Kiltwalk Aberdeen, Miss Caroline Jane Spence's Fund, The Hunter Foundation.

Our heartfelt thanks to all the fantastic volunteers who gave up their time, talents and energy to help at one of our fundraising events, at our Charity Shop, as part of our Friends groups, or doing practical projects, and to all those who donated raffle prizes other goods and services. We really appreciate your support.

Contact Us

Admin Office

71 Westburn Road
Aberdeen, AB25 2SH
Scotland, UK
t 01224 643327
e admin@archway.org.uk

Our Services

71 Westburn Road Aberdeen, AB25 2SH Scotland, UK t 01224 625595 e wr.manager@archway.org.uk	31 Two Mile Cross Garthdee Aberdeen AB10 7DL Scotland, UK t 01224 208428 e tmc.manager@archway.org.uk
36-39 Berryden Mills Berryden Road Aberdeen, AB12 3TE Scotland, UK t 01224 659740 e bd.manager@archway.org.uk	St Margaret's Place Aberdeen Scotland, UK t 01224 392115 e smp@archway.org.uk
153 Victoria Street Dyce Aberdeen, AB21 7BH Scotland, UK t 01224 775232 e dyce.manager@archway.org.uk	

This Review is also available to download from our website - www.archway.org.uk

The images used are for illustrative purposes only and do not necessarily relate to highlighted case studies. All photographs have been reproduced with kind permission from the individuals concerned or their parents/carers.

Archway is a charity registered in Scotland. Charity No: SC014665
Archway Charitable Trust is a charity registered in Scotland. Charity No: SC048760



Archway

www.facebook.com/archwayaberdeem

Charity Shop

www.facebook.com/ArchwayCharityShopAberdeen/

7till9 Club

www.facebook.com/7till9ClubAberdeen

Archway @ Home Facebook Group

www.facebook.com/groups/288563698971830/



www.linkedin.com/company/archwayaberdeem/



www.instagram.com/archwayaberdeem



www.twitter.com/archwayaberdeem

Archway is a charity registered in Scotland. Charity No: SC014665

Archway Charitable Trust is a charity registered in Scotland. Charity No: SC048760